



Level(s)

European framework for sustainable buildings

Why lifecycle thinking?

Based on a building's full life cycle, the building sector is responsible for:



1/2 of all extracted materials



1/2 of the total energy consumption



1/3 of water consumption



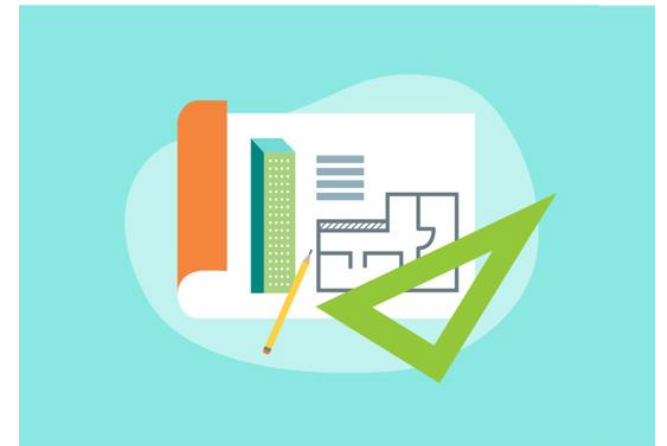
1/3 of waste generation

Level(s) provides the methodology to assess and report on sustainability.

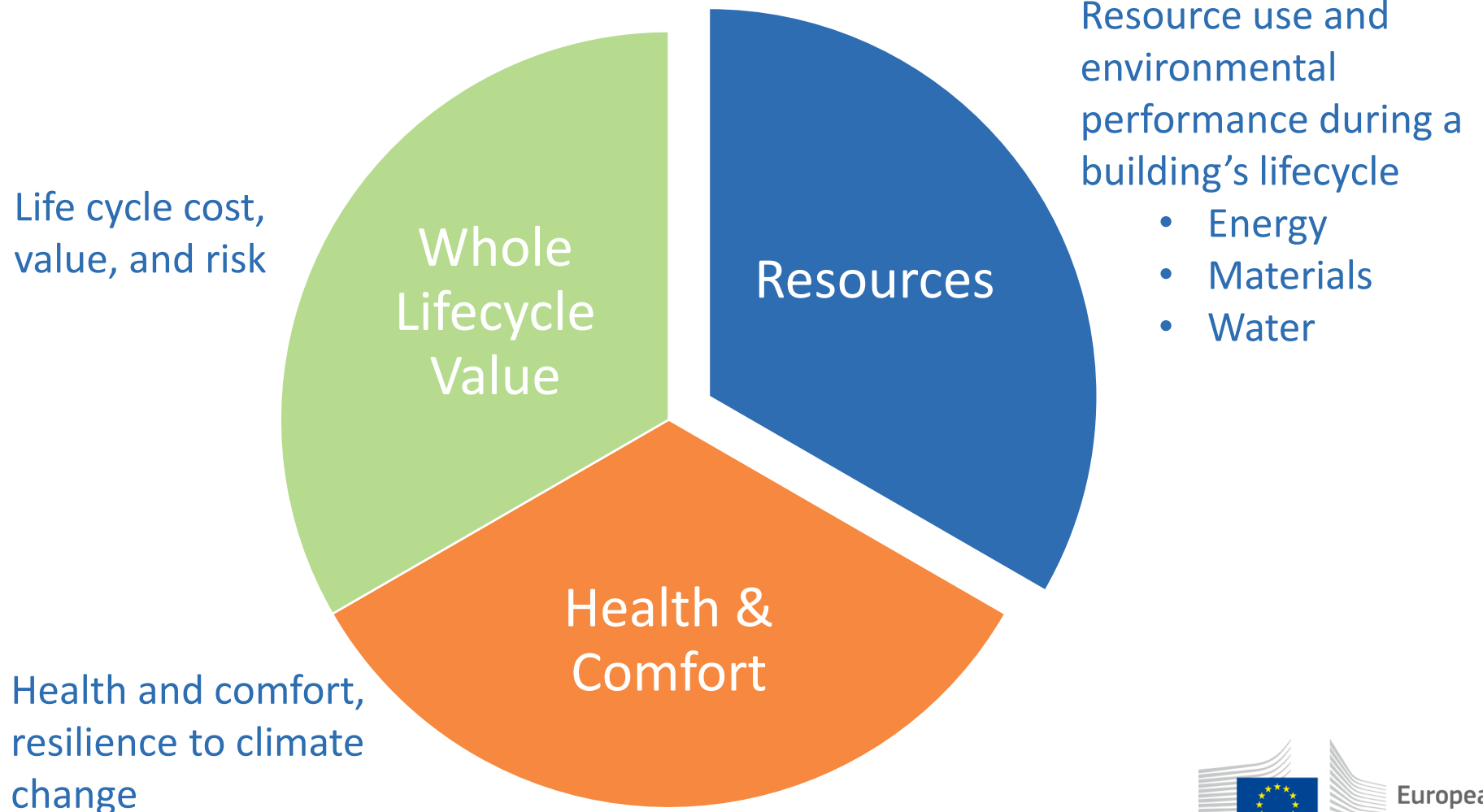
Level(s) as a common language

- New Built and Renovation
- Residential and Offices
- Detailed methodology developed with the sector and Member States
- Using best practice industry standards
- Core indicators tested by the sector
 - Entry-level tool for mainstream market
 - Certification schemes aligning

Level(s) provides the methodology to assess and report on sustainability.



What areas does Level(s) cover?



Common language for full life cycle



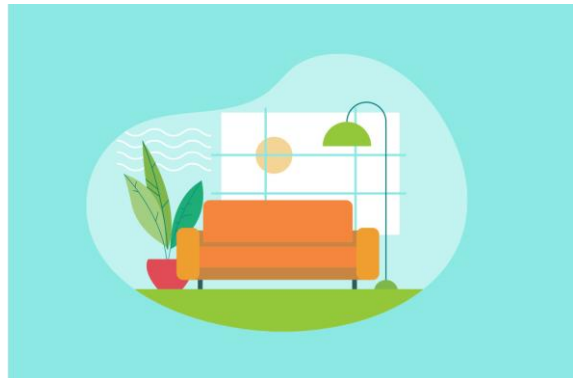
Whole life carbon



**Resource efficient
material flows**



Efficient use of water



Health and comfort



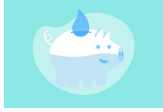

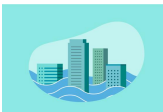



**Adaptation and resilience
to climate change**



Life cycle cost and value

Level(s): 3 themes, 6 macro objectives

| | Macro Objectives | Indicators | | | |
|---|---|--|--|--|-------------------------------|
|  | 1. Greenhouse gas emissions throughout building life cycle | 1.1 Use stage energy performance (kWh/m ² /yr) | 1.2 Life cycle Global Warming Potential (CO ₂ eq./m ² /yr) | | |
|  | 2. Resource efficient and circular material life cycles | 2.1 Bill of quantities, materials and lifespan | 2.2 Construction and Demolition waste | 2.3 Design for adaptability and renovation | 2.4 Design for deconstruction |
|  | 3. Efficient use of water resources | 3.1 Use stage water consumption (m ³ /occupant/yr) | | | |
|  | 4. Healthy and comfortable spaces | 4.1 Indoor air quality | 4.2 Time out of thermal comfort range | 4.3 Lighting | 4.4 Acoustics |
|  | 5. Adaption and resilience to climate change | 5.1 Life cycle tools: scenarios for projected future climatic conditions | 5.2 Increased risk of extreme weather | 5.3 Sustainable drainage | |
|  | 6. Optimised life cycle cost and value | 6.1 Life cycle costs (€/m ² /yr) | 6.2 Value creation and risk factors | | |

Use Level(s) at 3 different levels



Level 1

**Concept
stage/qualitative**

Level 2

**Design and
construction/
quantitative**

Level 3

**Reality/monitoring,
including the handover
to the client**

Level(s) influencing policy

- Definition of carbon performance
 - EPBD starts introducing elements of LCA (or whole life carbon) into building legislation
 - Roadmap for reduction of whole life carbon
- Sustainable Finance
 - Whole life carbon
 - Circular and efficient material flows
- Public Procurement
 - Whole life carbon in EED
 - New complete set of GPP criteria

Level(s) is the basis on which to bring circularity and lifecycle thinking into building policy.



Implementing RRPs

- Bridge between the ambition of the Green Deal and the realities of professional building operations.
- Ensure actions on individual buildings makes a measurable impact on critical issues on the macro level.
- Expand the toolbox to reduce whole life carbon emissions cost effectively

Level(s) brings minimum numbers of indicators, with maximum leverage to deliver sustainability.



National legislation

Sweden uses Level(s) as a basis to develop a ‘climate declaration’, for all new buildings.

Regional legislation

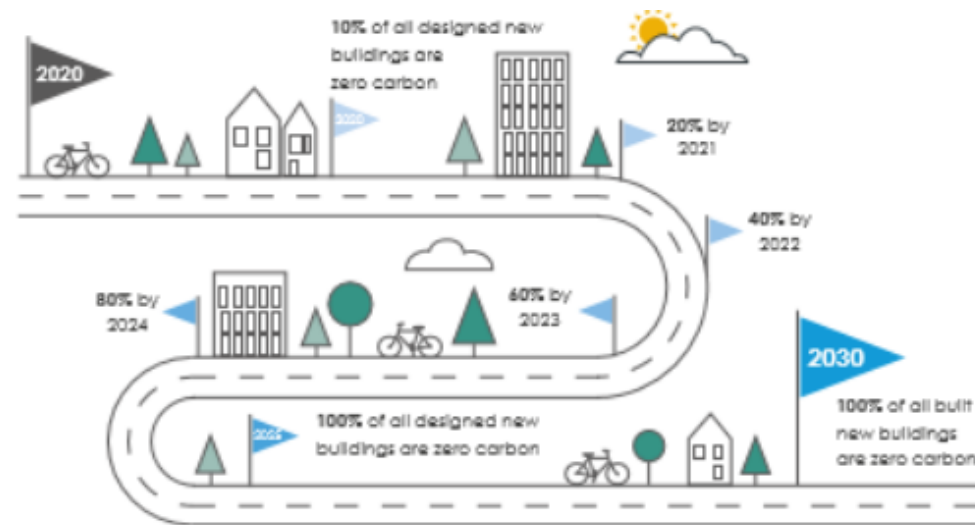
Regional regulation in Italy makes use of Level(s) indicators. Once there is a transnational framework, it becomes easier to push for national actions.

Certification

With Level(s) helping to define metrics, people can now talk about targets, instead of discussing the “best” calculation or assessment methods.

Roadmap for reducing whole life carbon

- Bring together expertise and initiatives
- Be inspired by front runners – engage across the EU
- Vision with milestones to steer policies, R&I, sector initiatives
- An accelerator



Reference: LETI CEDG

Key benefits of Level(s)

- Common language using best practice industry standards
- Tracks performance throughout the life cycle
- Brings accountability and investor confidence
- Enhances dialogue between stakeholders
- Supports sustainability skills and understanding
- Underpins future EU and national policies
- Future-proofing buildings for carbon neutrality

Level(s) is for you!



Design and Execution



Planning and Policy making



Financing

Thank you

Visit https://ec.europa.eu/environment/levels_en

To join the new Level(s) group on LinkedIn, visit
<https://www.linkedin.com/groups/12501037/>

Follow and share developments under #BuildCircular on social media
(Twitter, Facebook)